

GUI/HTTP – Steps needed for GUI to RUN

1. On the iSeries: make sure the HTTP server is running. To start the HTTP server—`strtcpsvr server(*HTTP) server instance *admin` then enter
2. Type in the address below to make sure the WAS instance is running:

<http://192.169.0.8:2001/HTTPAdmin> (exactly as shown)

You should see the area below labeled 'Manage Installed Apps' green...

If they are red, click on the left start button.

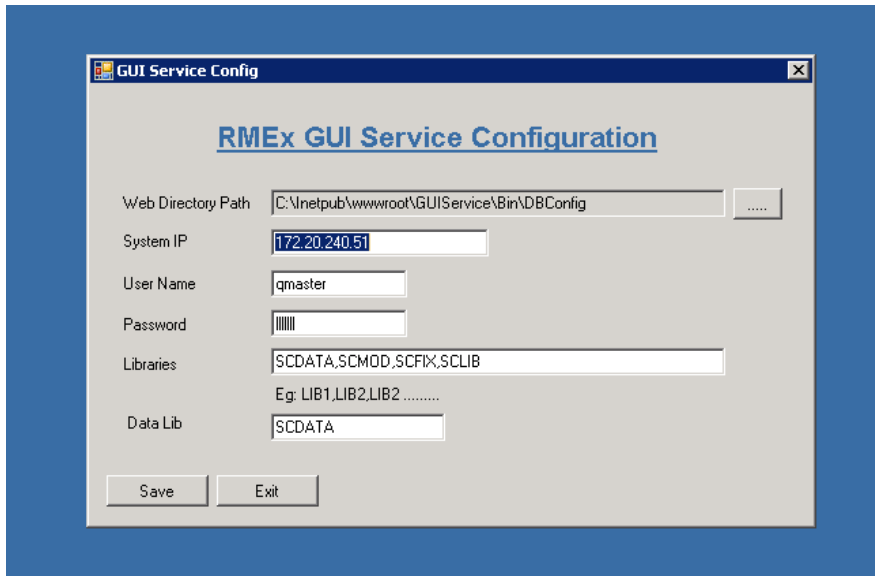
The screenshot shows the IBM Web Administration console interface. The main content area is titled "Manage WebSphere Application Server - V6.1.0.37 Express". It displays the current configuration for the application server, including virtual hosts, installed applications, and data sources. A red arrow points to the "Refresh" button in the "Current Configuration" section.

Current Configuration	Profile: "WAS61SVRM2"	Server: "WAS61SVRM2"
Manage Virtual Hosts	Manage Installed Applications	Manage Data Sources
<ul style="list-style-type: none">default_hostadmin_host	<ul style="list-style-type: none">RMExDefault_EARquerylvApp	<ul style="list-style-type: none">DefaultEJBTimerDataSource

Note: To update the status, click [Refresh](#)

3. The GUI server needs to be running – go to the IP address of the GUI (QServer). Make sure the server is up and running *and*

The following libraries need to be in this order...



4. If the agent receives a message that they need the server address added to Privacy-
Goto Tools → internet options → Privacy → select sites → enter the IP of the GUI server only and click allow, then ok. Sign back in and retry Events.

